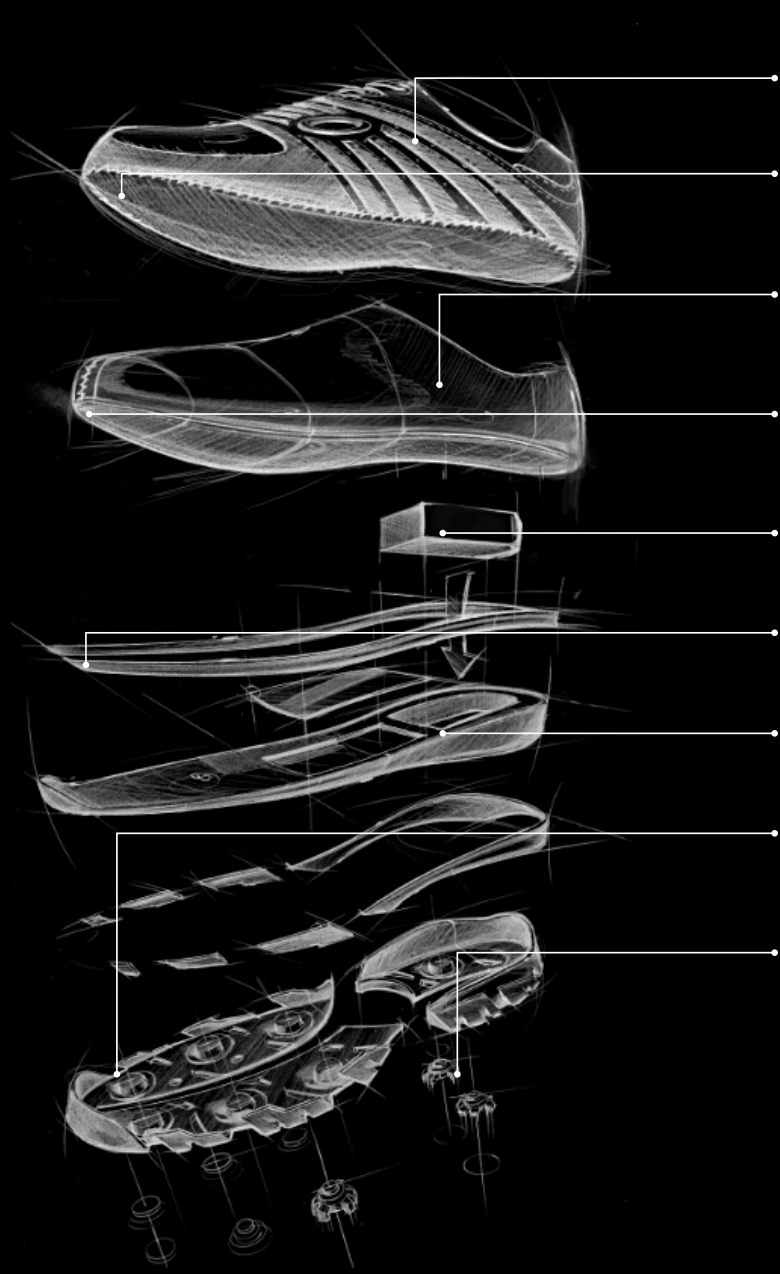


MEN’S FOOTWEAR TECHNOLOGY



Upper
The highest grade poromeric materials form the durable, water resistant outer shell.

Hydrophobic inner lining
The hydrophilic properties of the lining is an essential part of the moisture management system keeping the foot dry and comfortable.

Waterproof membrane
Sitting just below the upper shell is the hydrophobic shell. Completely encompassing the foot, this sealed layer prevents exterior moisture from penetrating.

Hydrophobic lasting board
Providing the first barrier directly under the foot is the non-wicking cellulose board over which the upper shell is flat lasted.

Red Code™ shock absorption heel unit
Precision tuned Polyurethane structure for optimal cushioning and long haul comfort.

Stability shank
Stabilization shank that supports the foot arch and prevents fatigue.

Lightweight EVA midsole
Lightweight compression molded EVA reduces shock provides all day walking comfort, and reduces weight.

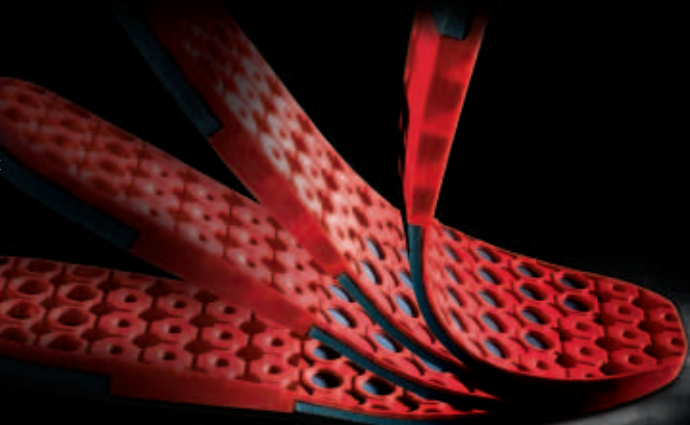
Injection molded TPU for stability and weight reduction
The supportive, lightweight exo-skeleton platform that provides stability and comfort.

Fast-Twist™, Trisport™, Trigrrip™, P.I.N.S.™ performance cleat system
Directional cleat lugs are specifically designed to flex for optimum comfort and provide maximum traction for all phases of the golf swing.



RED CODE™ FOAM & LONG TRAVEL GEOMETRY

The idea behind Oakley Red Code™ foam is that our proprietary blend of EVA rebounds slowly like memory foam, shaping itself to underfoot contours with plush comfort. For Oakley shoes that don't have Red Code, we maximize comfort with low-durometer EVA or prime urethane. Our footwear is built for the long haul, and we optimize comfort for each step along the way. Achieving that meant reinventing the midsole with "long travel" geometry that works like the suspension in a car. It's precisely tuned to absorb shock and give a smooth ride with optimal cushioning and comfort.



OAKLEY CIPHER™ GOLF SHOE

Part Oakley DNA, part Game-changer...the 2012 Oakley Golf Line boasts the lightest weight performance golf shoe in the world. Using Ceramic Alumina particles in our revolutionary cleatless traction platform, we are providing the worlds elite golfers with a competitive advantage that is durable, lightweight, and responsive.



NANOSPIKE™ TECHNOLOGY

Our user adaptable NanoSpike outsole platform eliminates the need for receptacles and cleats as your traction system. Saving weight, and bulk allows for a more flexible, sleeker and lower to the ground shoe profile.

Thousands of NanoSpikes biting into the blades of grass under your feet, providing superior traction on the course of your choosing.

Molded traction components are placed on the perimeter of the outsole allowing for edge traction throughout all positions of your golf swing.

FACTORY LITE™

Oakley Cipher is the lightest performance golf shoe in the world, weighing in at 260 grams. The NanoSpike technology provides the lightest weight, most state of the art technology in the golf shoe market.

At Oakley, we are aware of our history entrenched in technology, design and performance when it comes to groundbreaking products. So we simply followed our own tradition and created a golf shoe that surpasses everyones expectations.

- > Combining a breathable and lightweight textile with a welded element guard on the upper allows for great flexibility, a durable upper and a comfortable fit.
- > Being so lightweight, the Cipher decreases foot fatigue allowing the golfer to maximize performance on the green throughout the 18 holes of play.
- > The molded TPU stability cradle provides a stable stance for the golfer allowing maximum energy being transferred into the swing.